

CEILING | SYSTEMS

Between us, ideas become reality™

METALWORKS™ Mesh™



Intertwine Your Design

The industry's broadest portfolio of standard Mesh ceilings allows you to weave, weld and expand. Should your imagination exceed the norm, bend the rules with our custom capabilities.

Weave a new tale.

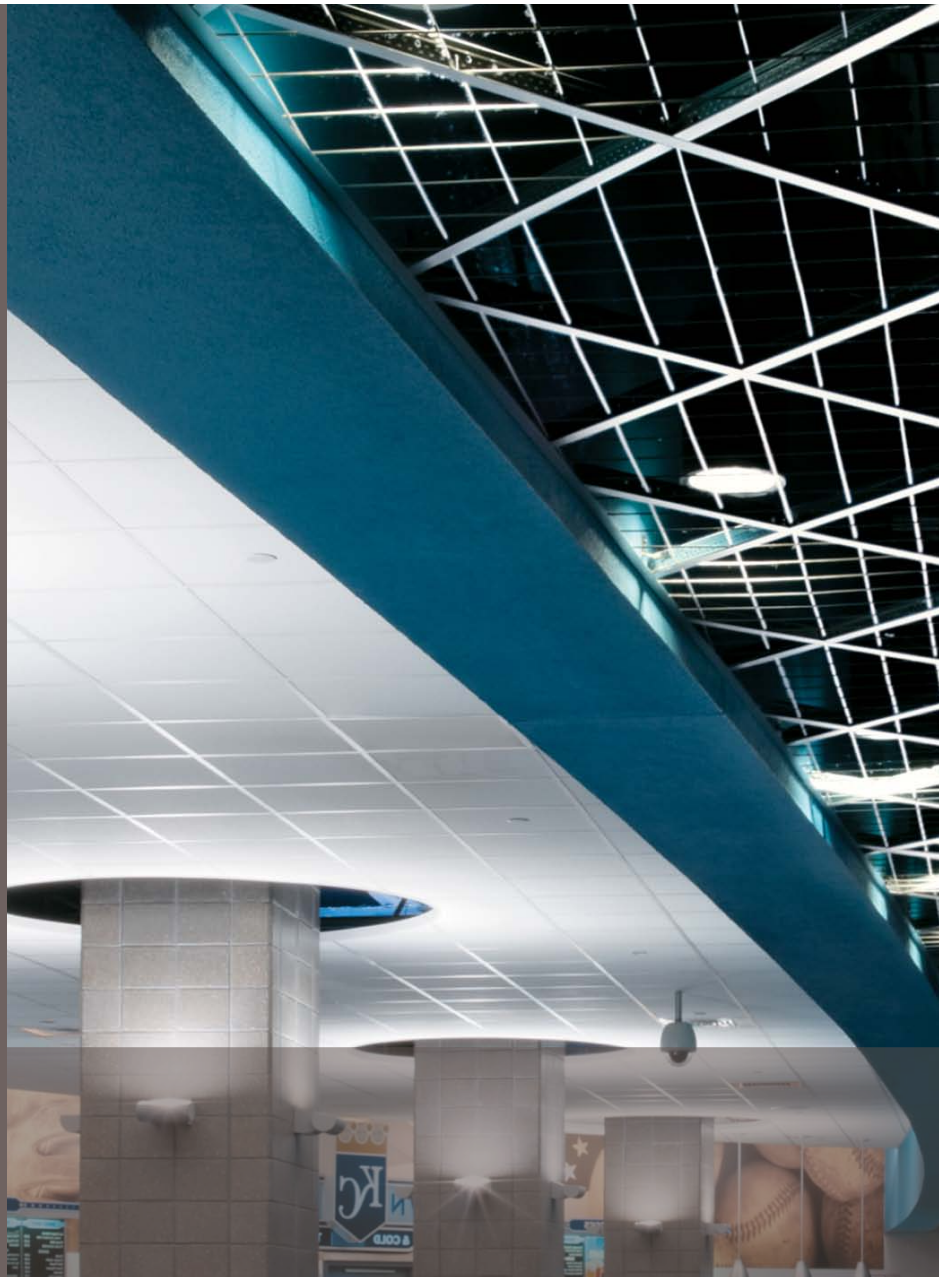
Whether you follow a linear road or hopscotch the squares, your woven story can have a colorful conclusion. Eleven standard designs and seven finishes provide the possibilities.

Weld a work of art.

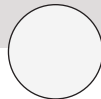
Sculpt a modern masterpiece with three welded designs available in seven flashy finishes.

Expand your horizons.

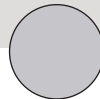
Climb the lattice or ride a waterfall's cascade with four expanded metal patterns in nine finishes.



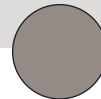
METALWORKS™ Mesh™ Color Selection



White
(WH)



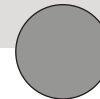
Silver Grey
(SG)



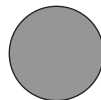
Gun Metal
Grey (MY)



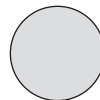
Tech Black
(BL)



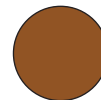
Nickel Chrome
(NC)*



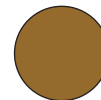
Bright
Anodized
(BA)**



Natural
Anodized
(NA)**



Copper
(CP)***



Bronze
(BZ)***

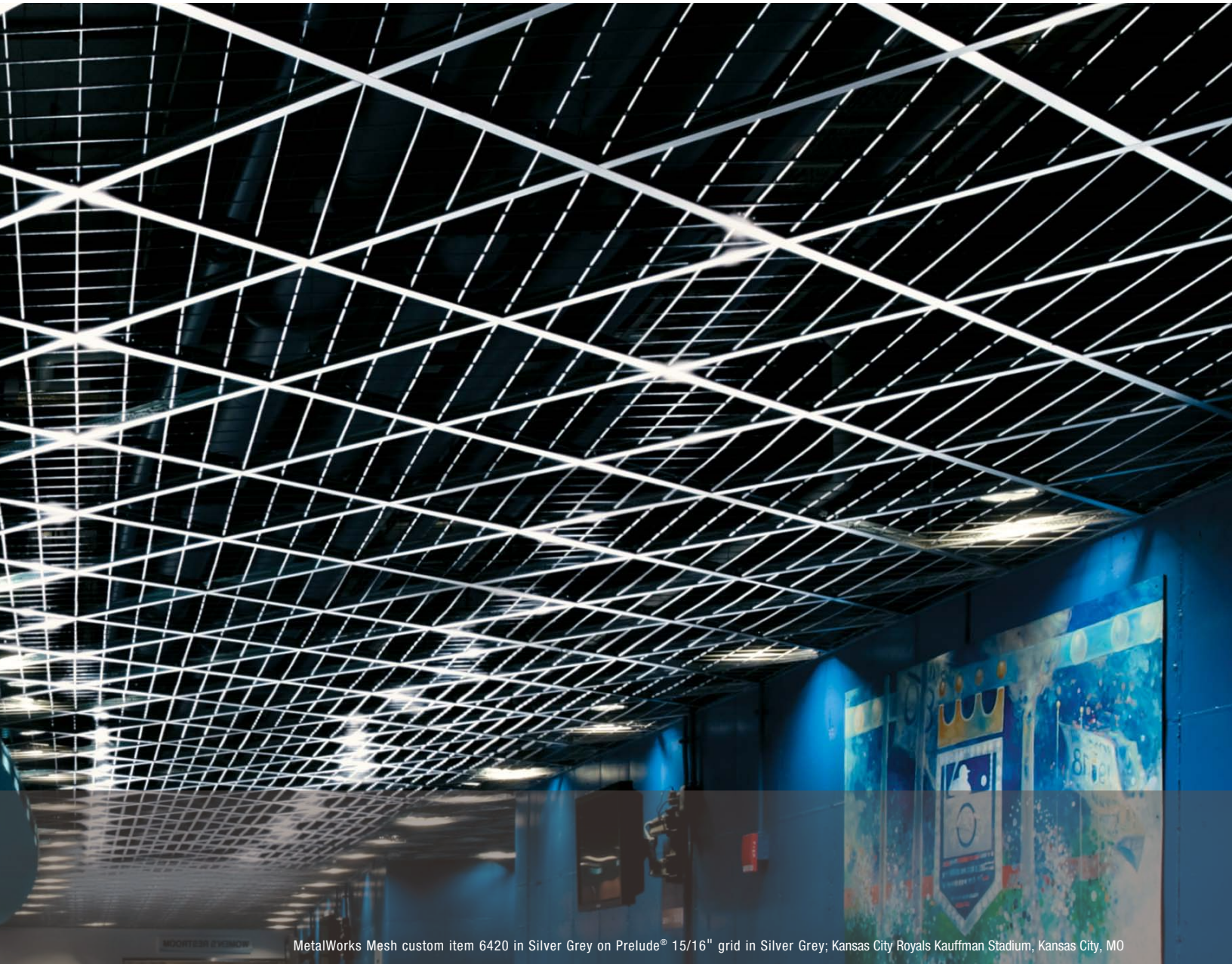
Cover photo: MetalWorks Mesh Cascades in Natural Anodized with Suprafine® XL® grid and Angle Molding in Silver Grey
Evelyn Meador Library, Seabrook, TX

* Standard color, available on all items except Cascades

** Standard color, only available on Cascades

*** Premium options

Custom RAL colors available by contacting Architectural Specialties at 1 877 ARMSTRONG, select options 1-1-4



MetalWorks Mesh custom item 6420 in Silver Grey on Prelude® 15/16" grid in Silver Grey; Kansas City Royals Kauffman Stadium, Kansas City, MO

Key Selection Attributes

- Create a contemporary, open feel
- Eighteen standard designs on 2' x 2' ceiling panels
- Seven standard colors and 2 premium, plus custom, RAL colors
- Flexible design – use as accent borders, clouds or full ceilings
- Simple and safe installation – panels lay in standard 15/16" grid with borders or finished edges
- Can be used in Formations™ Clouds
- Additional sizes, colors and patterns available as custom options

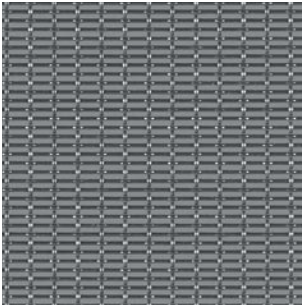
Typical Applications

- Office
- Education
- Hospitality and retail
- Healthcare
- Transportation (including Light Rail)

Note: For more information on premium and custom products, visit our website at armstong.com/metalworks or call 1 877 ARMSTRONG and select options 1-1-4 to work with the Architectural Specialties project management team.

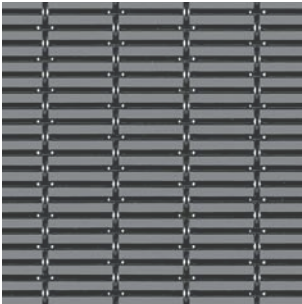
Woven Wire (Actual 1:3 scale shown)

Linear Weave



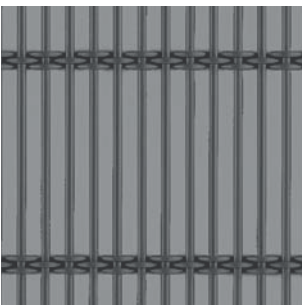
Single Mini

Item # 6413AM
 Warp Spacing (pattern): 0.3125"
 Fill Spacing (pattern): 0.143"
 Warp Wire Diameter: 0.063"
 Fill Wire Diameter: 0.063"
 % Open Area: 57%



Single Narrow

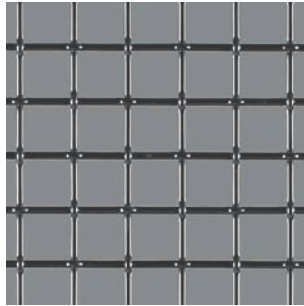
Item # 6414AM
 Warp Spacing (pattern): 0.105"
 Fill Spacing (pattern): 0.25"
 Warp Wire Diameter: 1.105"
 Fill Wire Diameter: 1.105"
 % Open Area: 52%



Triple Narrow

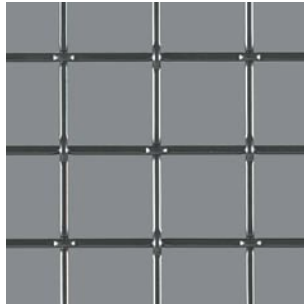
Item # 6128AM
 Warp Spacing (pattern): 3.15"
 Fill Spacing (pattern): 0.386"
 Warp Wire Diameter: 0.12"
 Fill Wire Diameter: 0.092"
 % Open Area: 62%

Square Weave



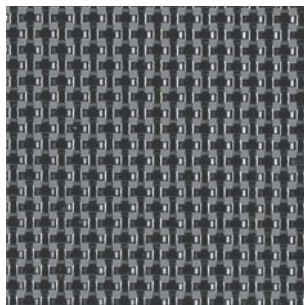
1Cell

Item # 6415AM
 Warp Spacing (pattern): 0.855"
 Fill Spacing (pattern): 0.855"
 Warp Wire Diameter: 0.105"
 Fill Wire Diameter: 0.105"
 % Open Area: 76%



2Cell

Item # 6416AM
 Warp Spacing (pattern): 1.387"
 Fill Spacing (pattern): 1.387"
 Warp Wire Diameter: 0.135"
 Fill Wire Diameter: 0.135"
 % Open Area: 82%



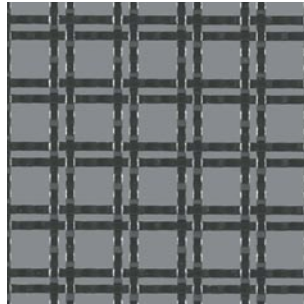
Single Flat Narrow

Item # 6411AM
 Warp Spacing (pattern): 0.25"
 Fill Spacing (pattern): 0.25"
 Warp Wire Dia. (crushed): 0.092"
 Fill Wire Dia. (crushed): 0.092"
 % Open Area: 21%



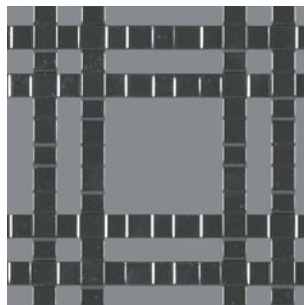
Twin Round Narrow

Item # 6129AM
 Warp Spacing (pattern): 0.25"/0.57"/0.25"/0.57"
 Fill Spacing (pattern): 0.25"/0.57"/0.25"/0.57"
 Warp Wire Diameter: 0.080"
 Fill Wire Diameter: 0.080"
 % Open Area: 61%



Twin Flat Narrow

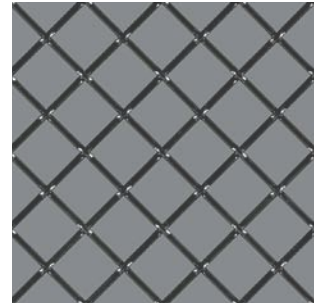
Item # 6412AM
 Warp Spacing (pattern): 0.25"/0.75"/0.25"/0.75"
 Fill Spacing (pattern): 0.25"/0.75"/0.25"/0.75"
 Warp Wire Dia. (crushed): 0.092"
 Fill Wire Dia. (crushed): 0.092"
 % Open Area: 53%



Twin Flat Wide

Item # 6410AM
 Warp Spacing (pattern): 0.75"/2.25"/0.75"/2.25"
 Fill Spacing (pattern): 0.75"/2.25"/0.75"/2.25"
 Warp Wire Diameter: 0.375" x 0.60"
 Fill Wire Diameter: 0.375" x 0.60"
 % Open Area: 56%

Diamond Weave



1Diamond

Item # 6417AM
 Warp Spacing (pattern): 0.855"
 Fill Spacing (pattern): 0.855"
 Warp Wire Diameter: 0.105"
 Fill Wire Diameter: 0.105"
 % Open Area: 76%



2Diamond

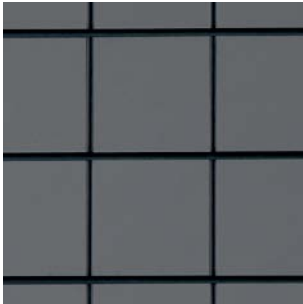
Item # 6418AM
 Warp Spacing (pattern): 1.326"
 Fill Spacing (pattern): 1.326"
 Warp Wire Diameter: 0.135"
 Fill Wire Diameter: 0.135"
 % Open Area: 82%

Welded Wire (Actual 1:3 scale shown) **Expanded Metal** (Actual 1:3 scale shown)



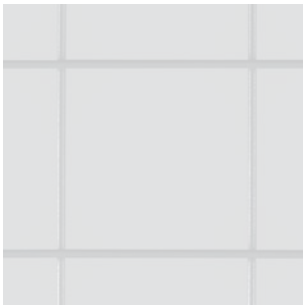
1Cell

Item # 6131AM
 Warp Spacing (pattern): 1.00"
 Fill Spacing (pattern): 1.00"
 Warp Wire Diameter: 0.120"
 Fill Wire Diameter: 0.120"
 % Open Area: 78%



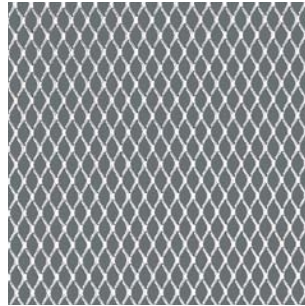
2Cell

Item # 6132AM
 Warp Spacing (pattern): 2.00"
 Fill Spacing (pattern): 2.00"
 Warp Wire Diameter: 0.120"
 Fill Wire Diameter: 0.120"
 % Open Area: 88%



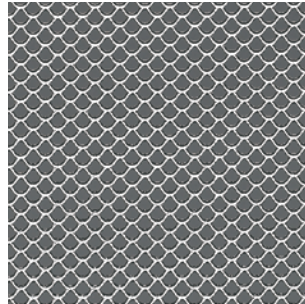
3Cell

Item # 6133AM
 Warp Spacing (pattern): 3.00"
 Fill Spacing (pattern): 3.00"
 Warp Wire Diameter: 0.120"
 Fill Wire Diameter: 0.120"
 % Open Area: 92%



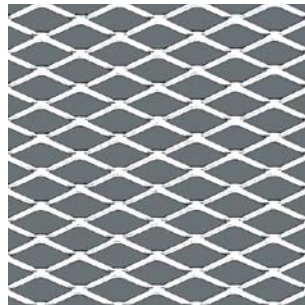
Lattice

Item # 6136AM
 Thickness: 0.036"
 SWD: 0.250"
 LWD: 0.500"
 SWO: 0.174"
 LWO: 0.400"
 % Open Area: 75%



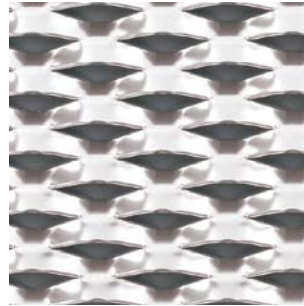
Scallops

Item # 6137AM
 Thickness: 0.048"
 SWD: 0.295"
 LWD: 0.394"
 SWO: 0.210"
 LWO: 0.250"
 % Open Area: 61%



Trellis

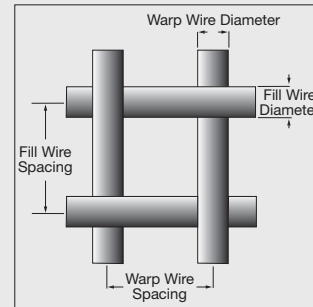
Item # 6138AM
 Thickness: 0.060"
 SWD: 0.515"
 LWD: 1.200"
 SWO: 0.355"
 LWO: 1.000"
 % Open Area: 70%



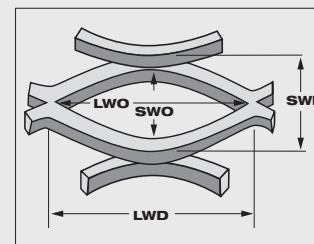
Cascades

Item # 6139AM
 Thickness: 0.080"
 SWD: 0.950"
 LWD: 2.000"
 SWO: 0.200"
 LWO: 1.125"
 % Open Area: 23%

Woven & Welded Wire Key



Expanded Metal Key

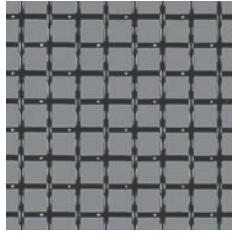


SWD – Short
 Way of Design
 LWD – Long Way of Design
 SWO – Short Way of Opening
 LWO – Long Way of Opening

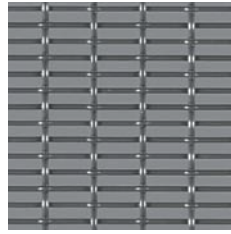
Custom Patterns* (Actual 1:3 scale shown, unless otherwise noted)



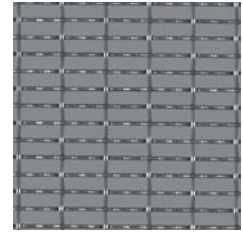
Item # 6419 (1:4 scale shown)



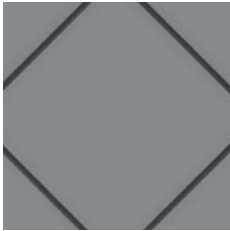
Item # 6424



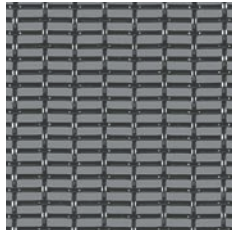
Item # 6429



Item # 6434



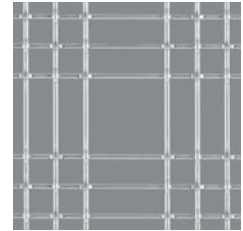
Item # 6420 (1:4 scale shown)



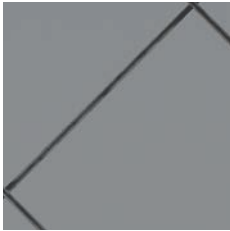
Item # 6425



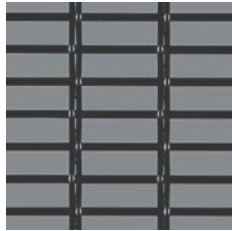
Item # 6430



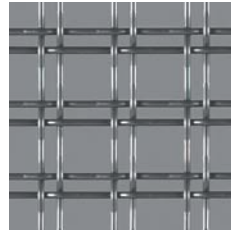
Item # 6435 (1:5 scale shown)



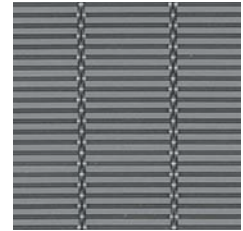
Item # 6421 (1:4 scale shown)



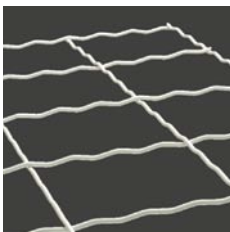
Item # 6426



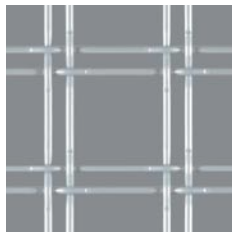
Item # 6431



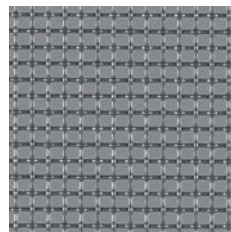
Item # 6436



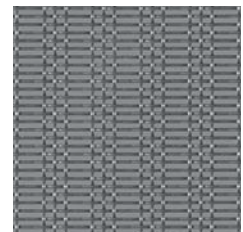
Item # 6422



Item # 6427



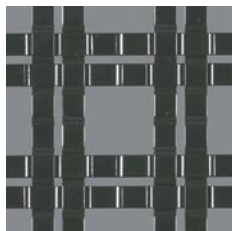
Item # 6432



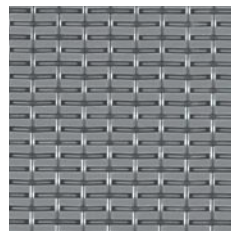
Item # 6437



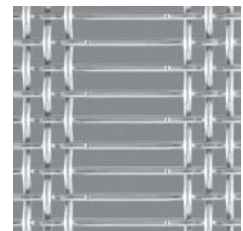
Item # 6423



Item # 6428



Item # 6433



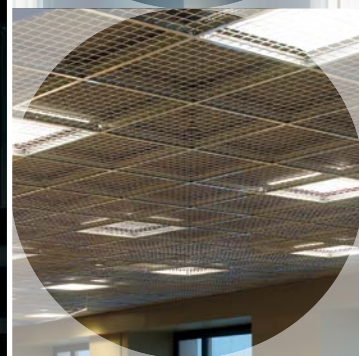
Item # 6438 (1:4 scale shown)

Note: Custom patterns are available in all standard colors except Bright and Natural Anodized.

* Minimum quantities and extended lead times may apply. For more information, visit our website at armstrong.com/metalworks or call 1 877 ARMSTRONG and select options 1-1-4 to work with the Architectural Specialties project management team.



Square Weave Twin Round Narrow

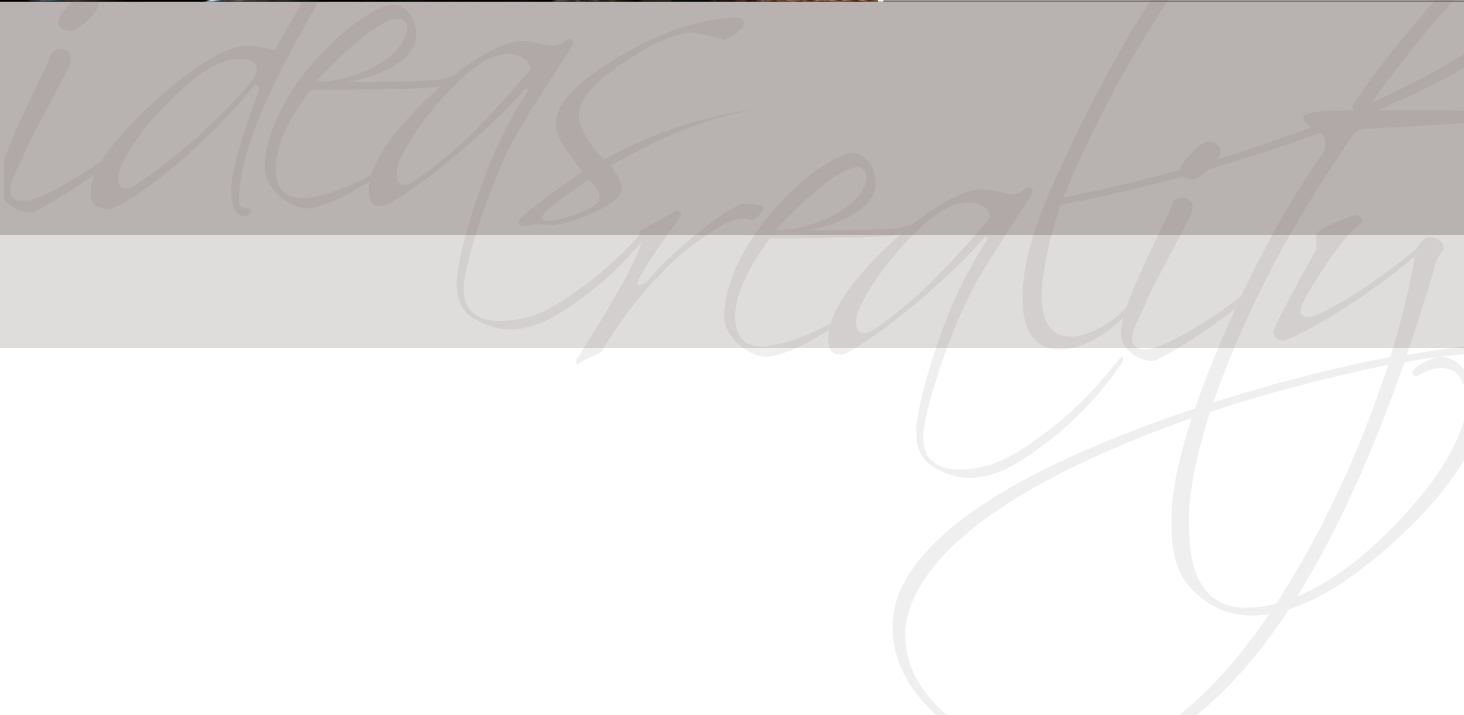


Wadded Wire 2 Cell



Square Weave Twin Round Narrow

MetalWorks™ Mesh™ Expanded Metal Scallops
in Nickel Chrome with 4" WoodWorks®
Natural Variations Dark Cherry trim on
Prelude® 15/16" grid in Mirror
University of South Carolina
Williams-Brice Stadium – Champions Club
Columbia, SC





MetalWorks Mesh Square Weave Twin Round Narrow in Nickel Chrome
on Prelude® 15/16" grid in Gun Metal Grey

Testimonial

Project: AXA Equitable

Location: New York, NY

Product: MetalWorks™ Mesh™

“We chose the MetalWorks Mesh product in a Nickel Chrome finish to add textural dimension and reflectivity to the ceiling, which enlivened the space. Another major factor for us was the ability to give the space added vertical dimension through the dark rendering of the open ceiling above. Due to the large range of choices of finish we were able to seamlessly integrate the product into our overall finish scheme.

The AXA users have been delighted with space and have used it far more, and for more events than they originally expected.”

*Lawrence Friedberg
Senior Associate - RA, NCARB
The Switzer Group
New York, NY*



METALWORKS™ Mesh™

Lay-in

Recycled Content: **25%**

armstrong.com/greengenie

LEED® Credits

Energy	Waste Mgmt	Recycled Content	Local Materials	Renewable Materials	Daylight & Views
✓	✓	✓	✓		
Location Dependent					

LEED for Schools

Acoustics	Low Emitting or CHPS
✓	✓

Colors

White (WH)
Silver Grey (SG)
Gun Metal Grey (MY)

Tech Black (BL)
Nickel Chrome (NC)*
Bright Anodized (BA)**

Natural Anodized (NA)**
Copper (CP)***
Bronze (BZ)***

Visual Selection

Item Number*	Description	Panel Dimensions	Interior Pattern Dimensions	% Open Area	Fire Rating	Weight/Panel (bulk packed)
WOVEN WIRE						
Linear Weave						
6413AM __	Single Mini	2' x 2'	0.3125" x 0.143"	57%	Class A	5.1
6414AM __	Single Narrow	2' x 2'	0.105" x 0.25"	52%	Class A	6.9
6128AM __	Triple Narrow	2' x 2'	3.15" x 0.386"	62%	Class A	4.2
Square Weave						
6129AM __	Twin Round Narrow	2' x 2'	0.25"/0.57"/0.25"/0.57"	61%	Class A	6
6410AM __	Twin Flat Wide	2' x 2'	0.75"/2.25"/0.75"/2.25"	56%	Class A	4.8
6411AM __	Single Flat Narrow	2' x 2'	0.25" x 0.25"	21%	Class A	8.2
6412AM __	Twin Flat Narrow	2' x 2'	0.25"/0.75"/0.25"/0.75"	53%	Class A	4.8
6415AM __	1Cell	2' x 2'	0.855" x 0.855"	76%	Class A	3.3
6416AM __	2Cell	2' x 2'	1.387" x 1.387"	82%	Class A	3.2
Diamond Weave						
6417AM __	1Diamond	2' x 2'	0.855" x 0.855"	76%	Class A	3.3
6418AM __	2Diamond	2' x 2'	1.326" x 1.326"	82%	Class A	3.2
WELDED WIRE						
6131AM __	1Cell	2' x 2'	1" x 1"	78%	Class A	4
6132AM __	2Cell	2' x 2'	2" x 2"	88%	Class A	2.3
6133AM __	3Cell	2' x 2'	3" x 3"	92%	Class A	1.6
EXPANDED METAL						
6136AM __	Lattice	2' x 2'	SWD 0.250", LWD 0.500"	75%	Class A	1.8
6137AM __	Scallops	2' x 2'	SWD 0.295", LWD 0.394"	61%	Class A	2.8
6138AM __	Trellis	2' x 2'	SWD 0.515", LWD 1.200"	70%	Class A	1.7
6139AM __	Cascades	2' x 2'	SWD 0.950", LWD 2.000"	23%	Class A	2.1

◆ When specifying or ordering, include the appropriate 2-letter color suffix (Ex: SG, NC)

Note: 100 square foot minimum order quantity for all Welded and Woven items. 160 square foot minimum order quantity for Expanded Metal items.

* Standard color, available on all items except Cascades

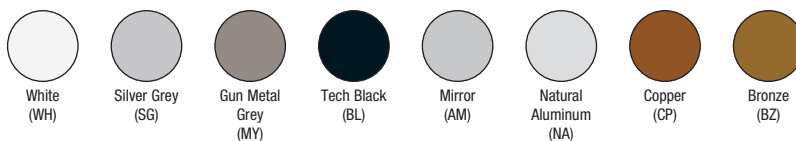
** Standard color, only available on Cascades

*** Premium options

Suspension Systems

15/16" Standard: Prelude® XL®

Coordinating Grid Colors



Accessories

Item Number	Description	Dimensions	Color	NRC	CAC	Pieces/ Carton
1728BL	Fine Fissured Square Lay-In Panel	2' x 2' x 5/8"	Tech Black	0.55	35	16
5823	BioAcoustic Infill Panel	2' x 2' x 5/8"	Black (Matte)	0.75†	NA	12

Note: Refer to CS-4172 for more information about acoustical infill panels.

† Please note that NRC values for item 5823 are stated for infill-to-infill comparison. Actual NRC value will vary based on panel and perforation selection.

METALWORKS™ Mesh™

Lay-in

Physical Data

Material

All items, except Cascades, are cold-rolled steel. Cascades is aluminum.

Surface Finish

Available finishes include a range of smooth, factory-applied powder-coated (post-coated) finishes. Anodized finishes (BA, NA) on Cascades only.

Fire Performance

ASTM E84 surface burning characteristics. Flame Spread Index 25 or less. Smoke Developed Index 50 or less. Fire Class A.

All MetalWorks Mesh panels are non-combustible. As with other architectural features located at the ceiling, Mesh panels may obstruct or skew the planned fire sprinkler water distribution pattern, or possibly delay or accelerate the activation of the sprinkler or fire detection systems by channeling the heat from a fire either toward or away from the device.

For panels that do not meet the criteria for open-grid ceilings as defined by NFPA 13, a 2' x 2' mineral fiber tile should be placed on the back of the Mesh panel when installing the ceiling, with the sprinkler installed below both panels. (Fine Fissured item 1728BL is an acceptable lay-in product for this use.)

Designers and installers are advised to consult a fire protection engineer, NFPA 13, and local codes for guidance where automatic fire detection and suppression systems are present.

Weight; Square Feet

See Page 9 (bulk packed)

Warranty

One (1) year limited warranty.
Details: armstrong.com/warranty

Design Considerations

For more open MetalWorks Mesh items where the suspension system may be visible through the panels, consider using a 360° Painted Grid System coordinated with the panel color.

Installation Considerations

Hold down clips may be required in some installations. The edges of MetalWorks Mesh panels feature unique detailing. Use caution and wear appropriate hand and eye protection when installing or cutting these metal panels. Refer to Installation Instructions LA-297075 at armstrong.com/metalworks for details and cutting recommendations.