



CEILING SYSTEMS

METALWORKS™
Torsion Spring



Armstrong®

METALWORKS™ Torsion Spring METALWORKS Torsion Spring Exterior

Flat Ceiling System
smooth texture



MetalWorks Torsion Spring panels in varied sizes in Silverlume with Prelude® 15/16" suspension system

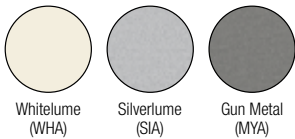
KEY SELECTION ATTRIBUTES

- Monolithic visual with 100% downward accessibility
- Choose from five standard panel sizes that install on pre-slotted standard 15/16" suspension system
- Interior panels feature swing down accessibility
- For exterior applications, choose from two standard panel sizes that install on 15/16" G90 suspension system
- Ceiltex finish is applied over the perforation to offer excellent acoustics and high light reflectance with the look of drywall
- Reflections™ laminate finishes provide superior wood-look visual with printed vinyl bonded to aluminum; visuals other than the ones shown are also available
- NRC values up to 0.90 with fiberglass infill panels (select perforation patterns)



COLOR SELECTION Due to printing limitations, shade may vary from actual product.

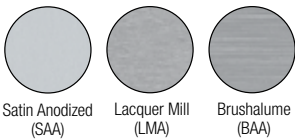
MetalWorks Interior and Exterior



Reflections Laminate Finishes Interior and Exterior



MetalWorks Interior Only



Reflections Laminate Finishes Interior Only



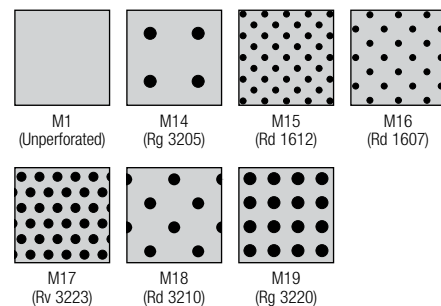
Ceiltex Interior Only



* Available in M20 perforation only. M20 is the M15 perforation covered with Ceiltex finish.

PERFORATION OPTIONS (1:2 scale shown)

Painted and Laminate Perforations



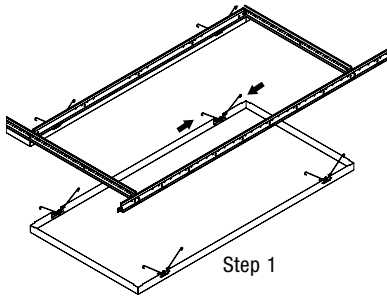
Additional sizes, laminates, colors, and perforations available. For more information, visit our web site at armstrong.com/metalworks or call 1 877 ARMSTRONG and select options 1-1-4 to work with the Architectural Specialties project management team.

Pictured on cover: MetalWorks Torsion Spring 24" x 24" panels with M15 perforation in Silverlume with Prelude 15/16" suspension system; Corporate Headquarters, Wayne, NJ

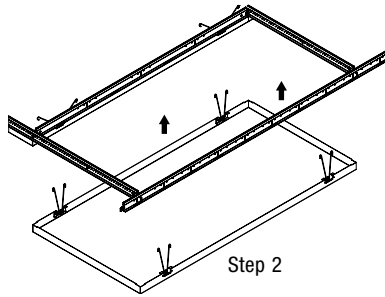
METALWORKS™ Torsion Spring METALWORKS Torsion Spring Exterior

Flat Ceiling System
smooth texture

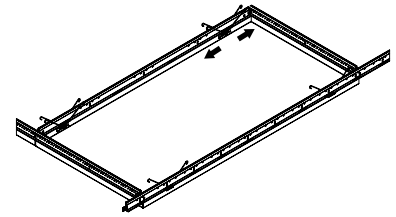
HOW TO INSTALL PANELS



Step 1

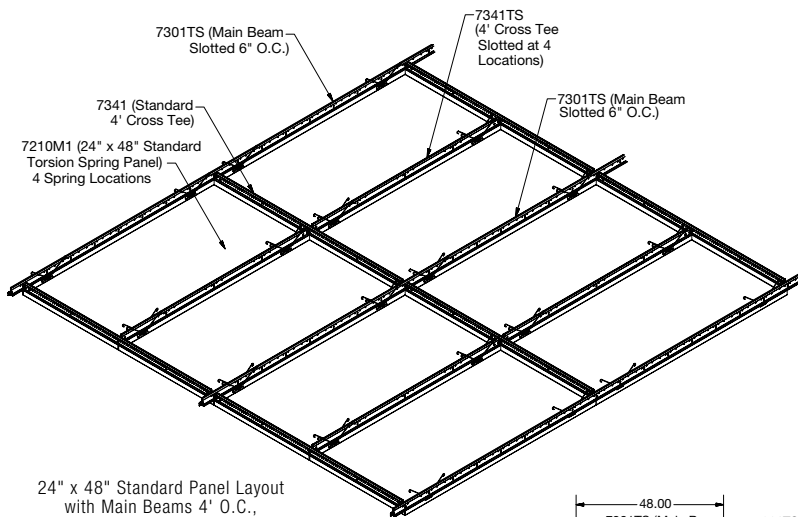


Step 2

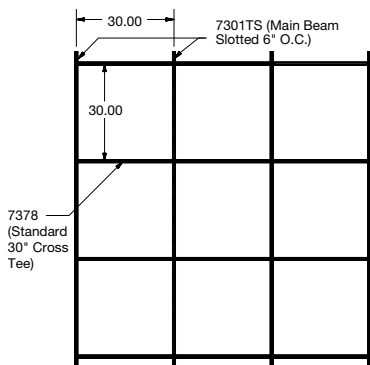


Step 3

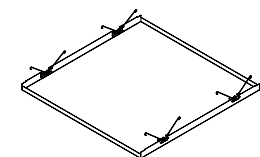
INTERIOR INSTALLATION DETAILS



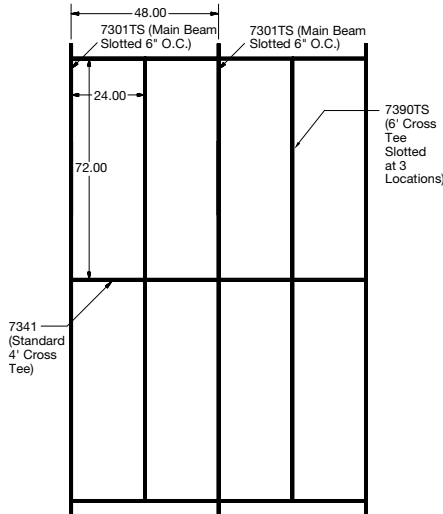
24" x 48" Standard Panel Layout
with Main Beams 4' O.C.,
Standard 4' Prelude® Cross Tees,
4' Slotted Cross Tees



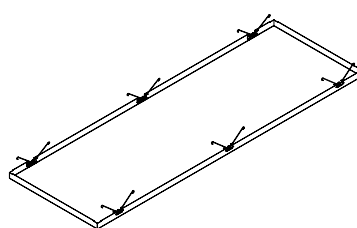
7378
(Standard
30" Cross
Tee)



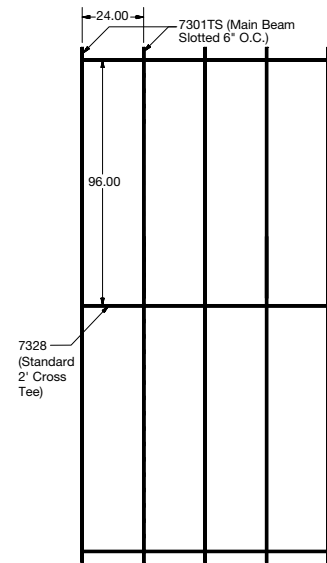
Suspension System Layout
for 30" x 30" Panels



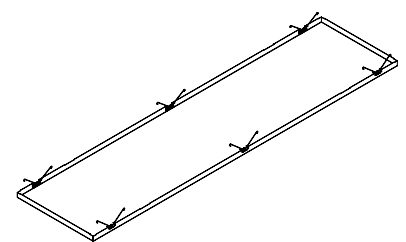
7341
(Standard
4' Cross
Tee)



Suspension System Layout
for 24" x 72" Panels



7328
(Standard
2' Cross
Tee)



Suspension System Layout
for 24" x 96" Panels



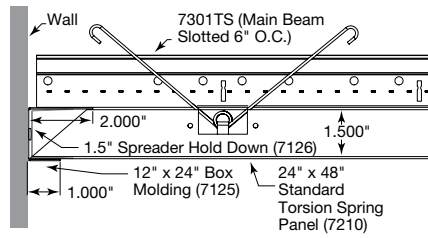
METALWORKS™ Torsion Spring METALWORKS Torsion Spring Exterior

Flat Ceiling System

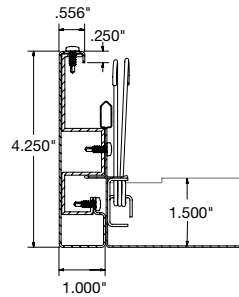
smooth texture

INTERIOR WALL PERIMETER DETAILS – For exterior details, consult the MetalWorks Exterior Torsion Spring installation instructions, BPLA-297922

Installation Detail – Wall Perimeter

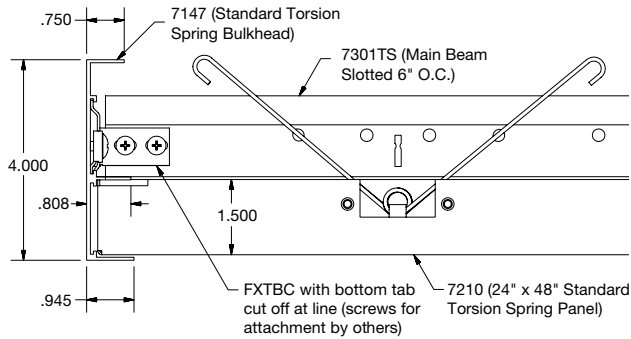


Installation Detail – Perimeter Trim (Formed Trim #7131)

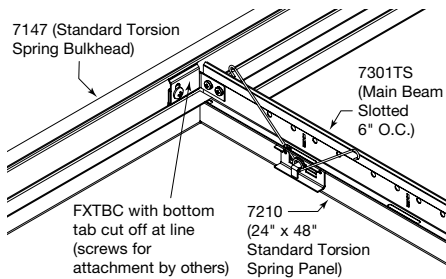
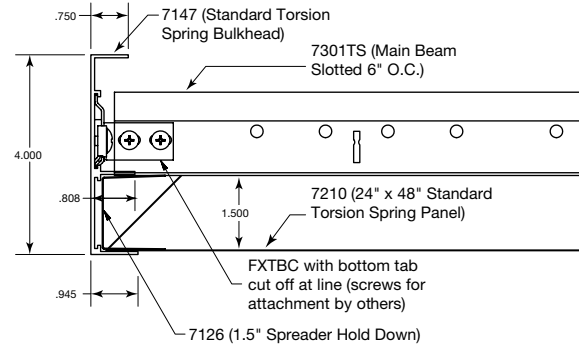


Installation Detail – Perimeter Trim (Extruded Trim #7147)

Full Panels



Cut Panels



METALWORKS™ Torsion Spring METALWORKS Torsion Spring Exterior

Flat Ceiling System
smooth texture

UP TO 98% RECYCLED CONTENT

LEED®

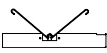
- acoustics
- energy*
- daylight & views*
- indoor air quality
- renewable materials
- recycled content
- waste mgmt
- local** materials

Calculate LEED contribution at armstrong.com/greengenie

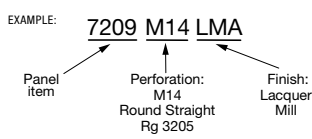
*CELTIX FINISH
**LOCATION DEPENDENT

VISUAL SELECTION

PERFORMANCE SELECTION

Edge Profile	Item Number*	Dimensions (Inches)	Light Reflect	Springs per Panel
METALWORKS Torsion Spring Square with Acoustical Fleece				
	7209 _ _ _ _ _	24 x 24"	0.77 0.89*	4
	7210 _ _ _ _ _	24 x 48"	0.77 0.89*	4
	7211 _ _ _ _ _	24 x 72"	0.77 0.89*	6
	7212 _ _ _ _ _	24 x 96"	0.77 0.89*	6
	7213 _ _ _ _ _	30 x 30"	0.77 0.89*	4
	Exterior Panels			
	7225 _ _ _ _ _	24 x 24"	0.77** 0.61***	4
	7226 _ _ _ _ _	24 x 48"	0.77** 0.61***	4

- * When specifying or ordering, include appropriate perforation and color suffix (e.g., 7209 M 1 4 L M A) with item number. Light reflectance is for unperforated Whitelume. For Ceiltex, specify M20 perforation.
- * Ceiltex light reflectance
- ** Unperforated Whitelume light reflectance
- *** Perforated Whitelume light reflectance



ACOUSTICAL INFORMATION

Dots represent high level of performance

Perforation	NRC with acoustical fleece**	NRC with 1" fiberglass infill panel**
M1†	–	–
M14†	0.55	0.85
M15†	0.70	0.90
M16†	0.70	0.80
M17†	0.75	0.90
M18†	0.65	0.85
M19†	0.75	0.90
M20 (Ceiltex only)	0.70	0.90

** Maximum NRC achieved with acoustical infill (item 8200100 or 5823). For additional infill options, refer to the Acoustical Infill data page (CS-4172).
† Available for exterior applications

ACCESSORIES

Item Number	Description	Dimensions (Inches) Nominal W x L x H	Color	Pieces/ Carton
7125 _ _ _ ♦	Box Molding (for Laminates, Black is recommended)	2 x 96 x 1.5"	WHA, SIA, MYA, SAA, LMA, BAA, BL	10
7147 _ _ _ ♦	Torsion Spring Perimeter Trim (Extruded)	1 x 120 x 4"	WH, SG, MY, BL	6
7131 _ _ _ ♦	Torsion Spring Perimeter Trim (Formed)	1 x 96 x 4.25"	LMA, BAA, SAA	6
7126	Spreader Hold Down	1 x 10-5/8 x 1-1/2"	N/A	10
5823	BioAcoustic™ Infill Panel	24 x 24 x 5/8"	Black	12
8200100	1" Fiberglass Infill Bag	24 x 24 x 1"	Black (Gloss)	12
7129	Torsion Spring Hook Access Tool	N/A	N/A	1
7130	Torsion Spring Suction Access Tool	N/A	N/A	1

- ♦ When specifying or ordering, include appropriate color suffix (e.g., 7125 S | A) with item number.

COLORS AND PERFORATIONS

Interior and Exterior	Interior Only	Perforations
Whitelume (WHA)	Satin Anodized (SAA)	Light Cherry (LLC)
Silverlume (SIA)	Lacquer Mill (LMA)	Pecan (LPC)
Gun Metal (MYA)	Brushalume (BAA)	Wild Cherry (LWC)
Natural Maple (LNMPIE)	Ceiltex (CLA)	Mineral Forest (LMF)
Natural Oak (LNOIE)	Arctic Maple (LAM)	Walnut (LWN)
	Rock Maple (LRM)	
		M1 (Unperforated)
		M14 (Rg 3205)
		M15 (Rd 1612)
		M16 (Rd 1607)
		M17 (Rv 3223)
		M18 (Rd 3210)
		M19 (Rg 3220)
		M20 (hidden, Ceiltex only)

SUSPENSION SYSTEMS

Item Number	Description	Dimensions (Inches)
15/16" Prelude® XL® – Some items slotted for Torsion Spring. See below.		
7301TS	Prelude 12' HD Main Beam – slotted for Torsion Spring	144 x 15/16 x 1-11/16"
XL7341TS	Prelude 4' Cross Tee – slotted for Torsion Spring	48 x 15/16 x 1-11/16"
XL7390TS	Prelude 6' Cross Tee – slotted for Torsion Spring	72 x 15/16 x 1-11/16"
XL7378	Prelude 30" Cross Tee	30 x 15/16 x 1-11/16"
XL7328	Prelude 2' Cross Tee	24 x 15/16 x 1-11/16"
XL7341	Prelude 4' Cross Tee	48 x 15/16 x 1-11/16"
Exterior Suspension System		
15/16" Prelude XL – Some items slotted for Torsion Spring. See below.		
7301G9OATS	Prelude 12' HD Exterior Main Beam – slotted for Torsion Spring	144 x 15/16 x 1-11/16"
XL7341G9OATS	Prelude 4' Exterior Cross Tee – slotted for Torsion Spring	48 x 15/16 x 1-11/16"
XL7321G9OA	Prelude 2' Exterior Cross Tee	24 x 15/16 x 1-11/16"



METALWORKS

METALWORKS™ Torsion Spring METALWORKS Torsion Spring Exterior

Flat Ceiling System

smooth texture

PHYSICAL DATA

Material

Aluminum – thickness 0.040"
Aluminum – thickness 0.050" (item 7226 only)

Surface Finish

Reflections™ laminates: Vinyl-faced membrane

Ceiltex: Acrylic latex paint on acoustically transparent membrane

Painted finishes: Factory-applied polyester paint

Fire Performance

Painted aluminum and Ceiltex finishes tested per ASTM E84. Flame Spread Index 25 or less. Smoke Developed Index 50 or less.

Painted Aluminum finishes CAN/ULC S102 surface burning characteristics: Flame Spread Rating 0. Smoke Developed Classification 0.

Laminate finish tested per ASTM E84. Flame Spread Index 75 or less. Smoke Developed Index 450 or less.

Acoustical Options

Perforated panels are supplied with a black fiberglass fleece to absorb sound.

Recycled Content

Minimum 25%. Up to 98% recycled content available.

Design Consideration

Anodized and Lacquer Mill finishes may vary in shade between production runs as well as over time. Sizes can be mixed and matched on non-perforated panels only.

30" x 30" panels have a directional finish that is perpendicular to the main beams; all other panel sizes have a directional finish that is parallel to the main beams.

MetalWorks steel and aluminum panels are made at different manufacturing facilities that use different paint systems. Because of this, similar colors, i.e., White and Whitelume, are not exact color matches. Please consider this when designing adjacent spaces with multiple MetalWorks products.

Wind Uplift Performance

24" x 24" and 24" x 48" panels noted as exterior on this document tested for wind uplift classes 30, 60, and 90. Specific installation instructions to meet these classes are available. For more information, visit armstrong.com or contact TechLine at 1 877 ARMSTRONG.

Design Support

Project management assistance is available by calling 1 877 ARMSTRONG, options 1-1-4 to work with the Architectural Specialties project management team.

Design Support

Project management a

Seismic Restraint

MetalWorks Torsion Spring has been engineered, tested, and approved for application in all seismic areas.

Weight; Square Feet

0.69 lbs/SF
0.86 lbs/SF (item 7226)