

# SILHOUETTE® XL® 1/4" REVEAL

## 9/16" Slotted Tee System



UP TO **30%** RECYCLED CONTENT  
 armstrong.com/greengenie

**LEED®**

waste mgmt  
 recycled content  
 local materials

\*LOCATION DEPENDENT



### KEY SELECTION ATTRIBUTES

- **Seismic Rx®** Suspension System saves time and money; Armstrong offers an ICC-ES approach to installations (ESR-1308)
- Hot dipped galvanized coating inhibits red rusting better than electrogalvanized or painted systems
- Some items available in metric sizes
- Rotary-stitched during manufacture for additional torsional strength and extra stability during installation; maintains size and shape of reveal when cutting perimeter cross tees
- XL<sup>2</sup> staked-on end detail provides secure locked connection



- Available with black reveal
- 10-Year Limited System Warranty; 30-Year Limited Ceiling Systems Warranty when used with **HumiGuard® Plus** products
- Main beams and cross tees can be ordered with special sizing and route spacing for your project needs

**FastSize™** main beams and cross tees can be ordered with special sizing and route spacing for your project needs in one carton minimums with two week lead times

NOTE: Additional Silhouette 1/4" reveal items for TechZone™ Integrated Ceiling Systems are listed in the TechZone Technical Guide (BPCS-4486). Available online at armstrong.com/techzone

### TYPICAL APPLICATIONS

- Offices
  - Education
  - Retail
  - Hospitality
- NEW** Blizzard White powder-coated finish coordinates with Optima®, Ultima®, Calla™, and Lyra™ ceiling panels for a clean, seamless, monolithic installed visual.

### VISUAL SELECTION

### PERFORMANCE PACKAGING

Item No.	Face Profile	Description	Route Spacing	Notching	Dimensions (Inches)	Hanger Spacing* Lbs./Lin. Ft.	4 Ft.	5 Ft.	Fire Guard™	Seismic Category	Pcs./ Ctn.	Lin.Ft./ Ctn.
<b>Silhouette XL – 1/4" Reveal</b>							<b>4 Ft.</b>	<b>5 Ft.</b>	•			
□ 7601_ _ ♦	9/16"	12' HD Main Beam – Notched 24" O.C.	24" O.C.		144 x 9/16 x 1-3/4"	16.35	7.80	–	•		20	240
□ 7612_ _ ♦	9/16"	12' HD Main Beam – Unnotched	–		144 x 9/16 x 1-3/4"	16.35	7.80	–	•		20	240
□ 7600_ _ ♦	9/16"	12' ID Main Beam – Notched 24" O.C.	24" O.C.		144 x 9/16 x 1-3/4"	13.10	6.61	–	–		20	240
□ 7602_ _ ♦	9/16"	10' ID Main Beam – Notched 24" O.C.	24" O.C.		120 x 9/16 x 1-3/4"	13.10	6.61	–	–		20	200
□ 7603_ _ ♦	9/16"	12' ID Main Beam – Notched 48" O.C.	48" O.C.		144 x 9/16 x 1-3/4"	13.10	6.61	–	–		20	240
□ 7606_ _ ♦	9/16"	10' ID Main Beam – Notched 30" O.C.	30" O.C.		120 x 9/16 x 1-3/4"	13.10	6.61	–	–		20	200
□ XL7680_ _ ♦	9/16"	8' Cross Tee – Unnotched	–		96 x 9/16 x 1-3/4"	12.59**	–	–	•		20	160
□ XL7690_ _ ♦	9/16"	6' Cross Tee – Unnotched	–		72 x 9/16 x 1-3/4"	12.59**	–	–	•		20	120
□ XL7650_ _ ♦	9/16"	5' Cross Tee – Unnotched	–		60 x 9/16 x 1-3/4"	–	6.09	–	•		30	150
□ XL7655_ _ ♦	9/16"	5' Cross Tee – Center-notched, both sides	–		60 x 9/16 x 1-3/4"	–	5.71	–	•		30	150
□ XL7654_ _ ♦	9/16"	5' Cross Tee – Notched, both sides at 20", 40"	–		60 x 9/16 x 1-3/4"	–	5.71	–	•		30	150
□ XL7651_ _ ♦	9/16"	5' Cross Tee – Notched, one side at 20", 40"	–		60 x 9/16 x 1-3/4"	–	5.71	–	•		30	150
□ XL7640_ _ ♦	9/16"	4' Cross Tee – Unnotched	–		48 x 9/16 x 1-3/4"	13.53	–	–	•		60	240
□ XL7645_ _ ♦	9/16"	4' Cross Tee – Center-notched, both sides	–		48 x 9/16 x 1-3/4"	12.85	–	–	•		60	240
□ XL7646_ _ ♦	9/16"	4' Cross Tee – Center-notched, one side	–		48 x 9/16 x 1-3/4"	13.21	–	–	•		60	240
□ XL7670_ _ ♦	9/16"	30" Cross Tee – Unnotched	–		30 x 9/16 x 1-3/4"	39.86 @ 2.5'	–	–	•		60	150
□ XL7620_ _ ♦	9/16"	2' Cross Tee – Unnotched	–		24 x 9/16 x 1-3/4"	69.69	71.66 @ 2'	–	•		60	120
□ XL7610_ _ ♦	9/16"	1' Cross Tee – Unnotched	–		12 x 9/16 x 1-3/4"	69.69	71.66	–	•		120	120



□ **FastSize** 9/16" Main beams L: 36" - 144" / Cross tees L: 6" - 144" / Route spacing 3" from ends, 6" thereafter

Varies Varies

ASTM Class  
 HD - Heavy-duty  
 ID - Intermediate-duty  
 LD - Light-duty

Item No.	Description	Length	(A) Flange	(B) Flange	(C) Flange	Pcs./ Ctn.	Lin. Ft./ Ctn.
----------	-------------	--------	------------	------------	------------	------------	----------------

### Suggested Wall Moldings and Shadow Moldings (Additional molding options available. See catalog pgs. 269-270)

□ 7804_ _ ♦	12' Hemmed Angle Molding	144"	9/16"	7/8"	–	30	360
□ 7873_ _ ♦	10' Shadow Molding	120"	9/16"	15/16"	3/8"	30	300
□ 7878_ _ ♦***	10' Seismic Shadow Molding	120"	15/16"	15/16"	3/8"	30	300

\* Simple Span

\*\* Wire at 4'

\*\*\* Suitable for Category D, E, F Seismic Installation with BERC2 clip

♦ Items available in Standard and Blizzard White powder-coated finish

♦ Items available in Blizzard White powder-coated finish only

When specifying or ordering items with a color or finish, add the two-letter suffix to the end of the item number (e.g., 7301BL – Tech Black)



# SILHOUETTE® XL® 1/4" REVEAL

## 9/16" Slotted Tee System

### MAXIMUM FIXTURE WEIGHT

Configuration		Item No.	Fixture		Planning Module		Hanger Spacing		Maximum Weight	
A	B		A	B	A	B	A	B	A	B
Main Beam to Main Beam – Drawing Key: Main beam (↑) Cross tee (---) Hanger wire (↔)										
		7600/7602 7601	24" x 48"	24" x 48"	48" x 48"	48" x 48"	48"	48"	73.0 lbs. 76.0 lbs.	73.0 lbs. 76.0 lbs.
			24" x 48"	24" x 48"	48" x 48"	48" x 48"	48"	48"	75.0 lbs. 75.0 lbs.	75.0 lbs. 75.0 lbs.

Main beams tested as follows: 7600 tested at 13.1 lbs/LF to 1/360 of 4' span; 7601 tested at 16.35 lbs/LF to 1/360 of 4' span.

Cross Tee to Cross Tee – Drawing Key: Main beam (↑) Cross tee (---) Hanger wire (↔)										
		XL7645 XL7646	24" x 48"	24" x 48"	48" x 48"	48" x 48"	48"	48"	59.0 lbs.	41.0 lbs.
			24" x 48"	24" x 48"	48" x 48"	48" x 48"	48"	48"	59.0 lbs.	41.0 lbs.

Cross tees tested as follows: XL7645 tested at 12.0 lbs/LF to 1/360 of 4' span.

Fixtures weighing more than 56 lbs. should be independently supported. Fixture weight is based on single fixture only. For end-to-end fixtures or other configurations not shown, consult your Armstrong representative.  
NOTE: The above data is based on 48" hanger wire spacing, board weight of 1 lb./SF, maximum deflection of cross tees not to exceed 1/360 of the span, and suspension system installed in accordance with ASTM C636.

### COLOR AND FINISH SELECTION

#### Standard\*



White  
(WH)



Tech Black  
(BL)



Blizzard  
White  
(ZW)

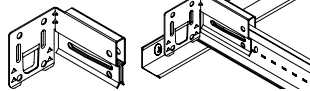
- \* Available with Black reveal, add suffix Bl, (e.g., 7600BL)
- ❖ Items available in powder-coated finish

#### Powder-coated Finish\*

### ACCESSORIES

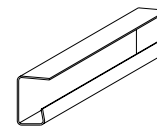
**BERC2 – 2" Beam End Retaining Clip** – Allows you to create a code compliant Seismic D, E, F ceiling installation while eliminating the need to use 2" wall molding or spreader bars.

**ALBERC2** (aluminum)



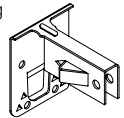
200 pcs/bucket

**MCC4 – Silhouette 1/4" Reveal Miter Closure Clip** – Eliminates main beam and cross tee miters.



200 pcs/bucket

**GCWA – Grip Clip Wall Attachment** – Joins main beam or cross tee to wall molding via locking barbs without pop rivets or screws.



250 pcs/bucket

### DETAILS

For more information, see submittal BPCS-3157.

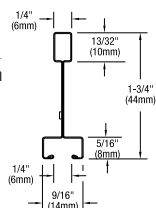


SILHOUETTE XL  
Main Beam

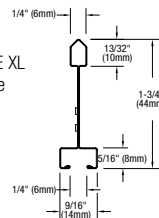


SILHOUETTE XL  
Cross Tee

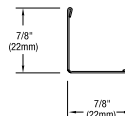
SILHOUETTE XL  
Main Beam with  
1/4" Reveal



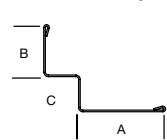
SILHOUETTE XL  
Cross Tee



7/8" Hemmed  
Angle Molding



Shadow Molding



### SEISMIC PERFORMANCE

#### Main Beams

7600/804042, 7606, 7602, 7601, 7603

#### Minimum Lbs. To Pull Out Compression/Tension

340.0, 392.9, 340.0

#### Cross Tees

XL7610, XL7620/802042, XL7640, XL7645/803042, XL7646, XL7650, XL7670, XL7655, XL7680, XL7690

#### Minimum Lbs. To Pull Out Compression/Tension

299.5

#### ICC Reports

For areas under ICC jurisdiction, see ICC evaluation report number ESR-1308 for allowable values and/or conditions of use concerning the suspension system components listed on this page. The report is subject to reexamination, revisions and possible cancellation.

To derive maximum lbs/sf, divide the on-center spacing of the component into the lbs/lf given in the load test data table.

### PHYSICAL DATA

#### Material

Double-web hot dipped galvanized steel

#### Surface Finish

Baked polyester paint or powder-coated finish

#### Face Dimension

9/16"

#### Profile

Bolt-slot

#### Cross Tee/Main Beam Interface

Mitered

#### End Detail

Main Beam: Coupling

Cross Tee: Staked-on clip

TechLine<sup>SM</sup> / 1 877 ARMSTRONG  
1 877 276 7876



armstrong.com/suspensionsystem  
BPCS-3157-314

LEED® is a registered trademark of the U.S. Green Building Council  
All other trademarks used herein are the property of AWI Licensing Company and/or its affiliates  
© 2014 AWI Licensing Company • Printed in the United States of America

